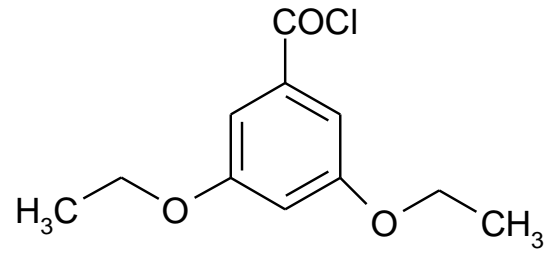


3,5-dietoxi-benzoilklorid  
CDCl<sub>3</sub>  
PROTON



7.196  
7.188  
6.717  
6.709

4.083  
4.055  
4.027  
4.000

1.450  
1.422  
1.395

2.00

1.00

4.00

6.01

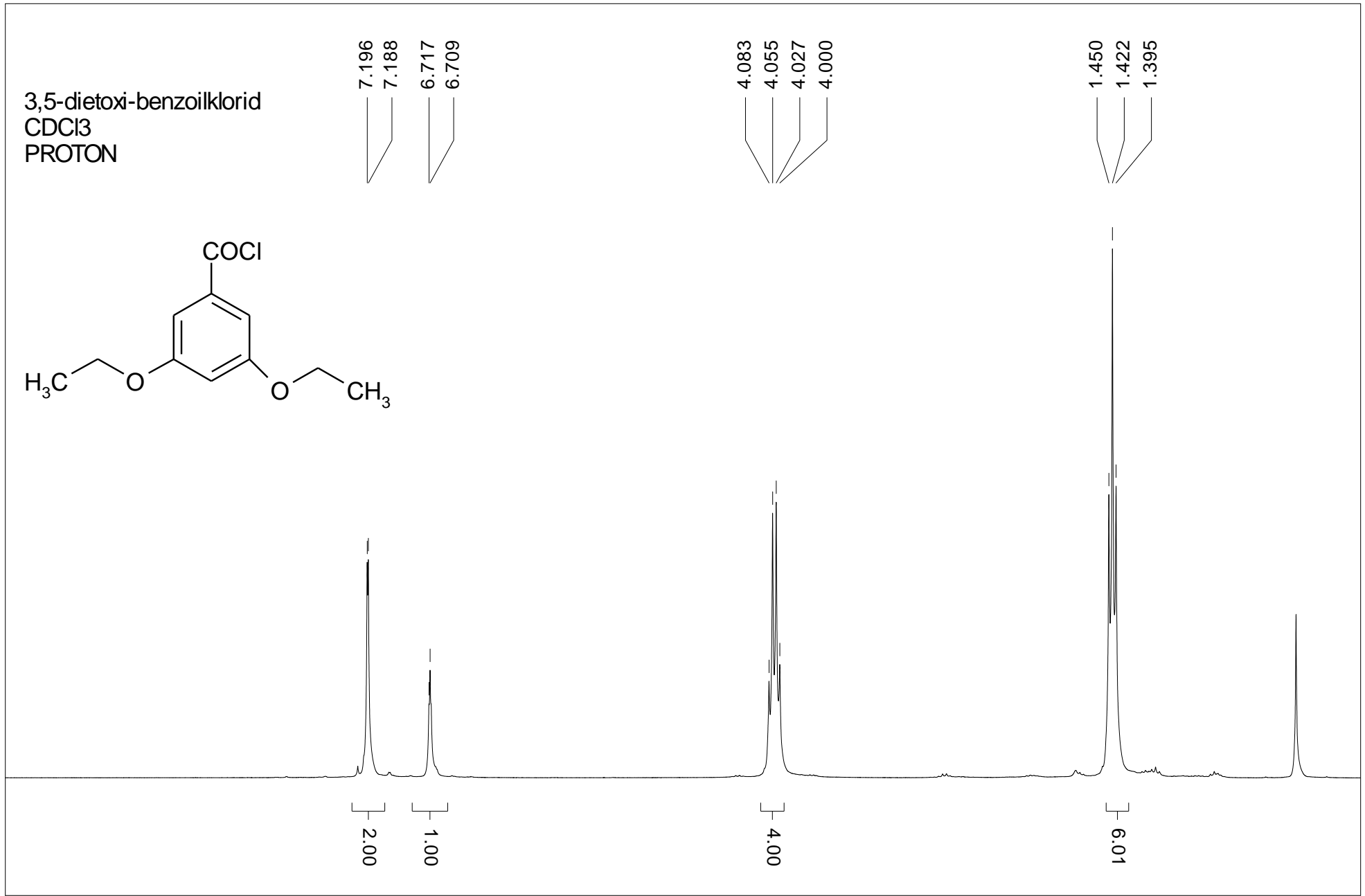
ppm (t1)

7.5

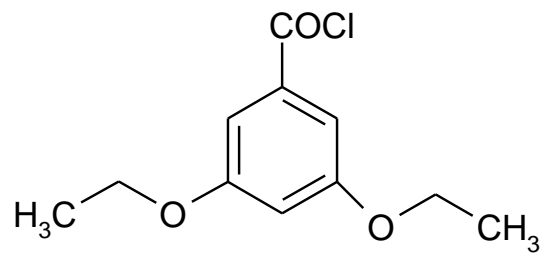
5.0

2.5

0.0



3,5-dietoxy-benzoilklorid  
CDCl<sub>3</sub>  
C13CPD32



168.225

160.186

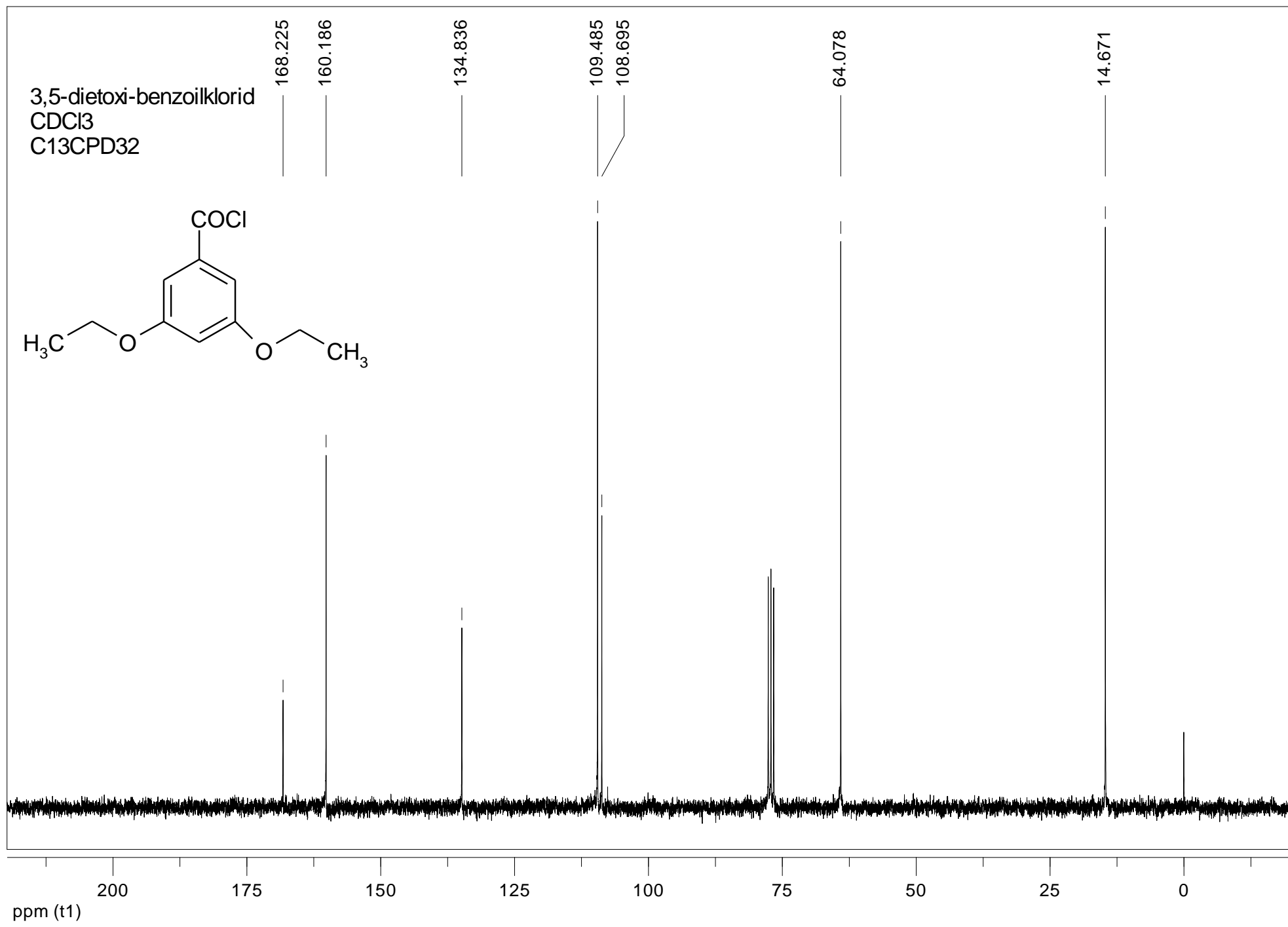
134.836

109.485

108.695

64.078

14.671



ppm (t1)