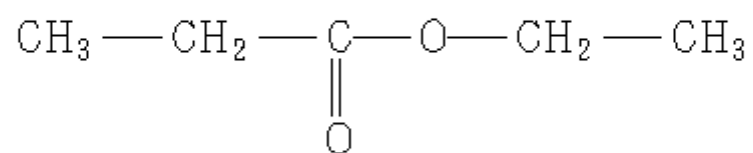


SDBS-NO= 2285
ETHYL PROPIONATE



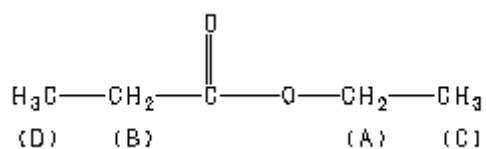
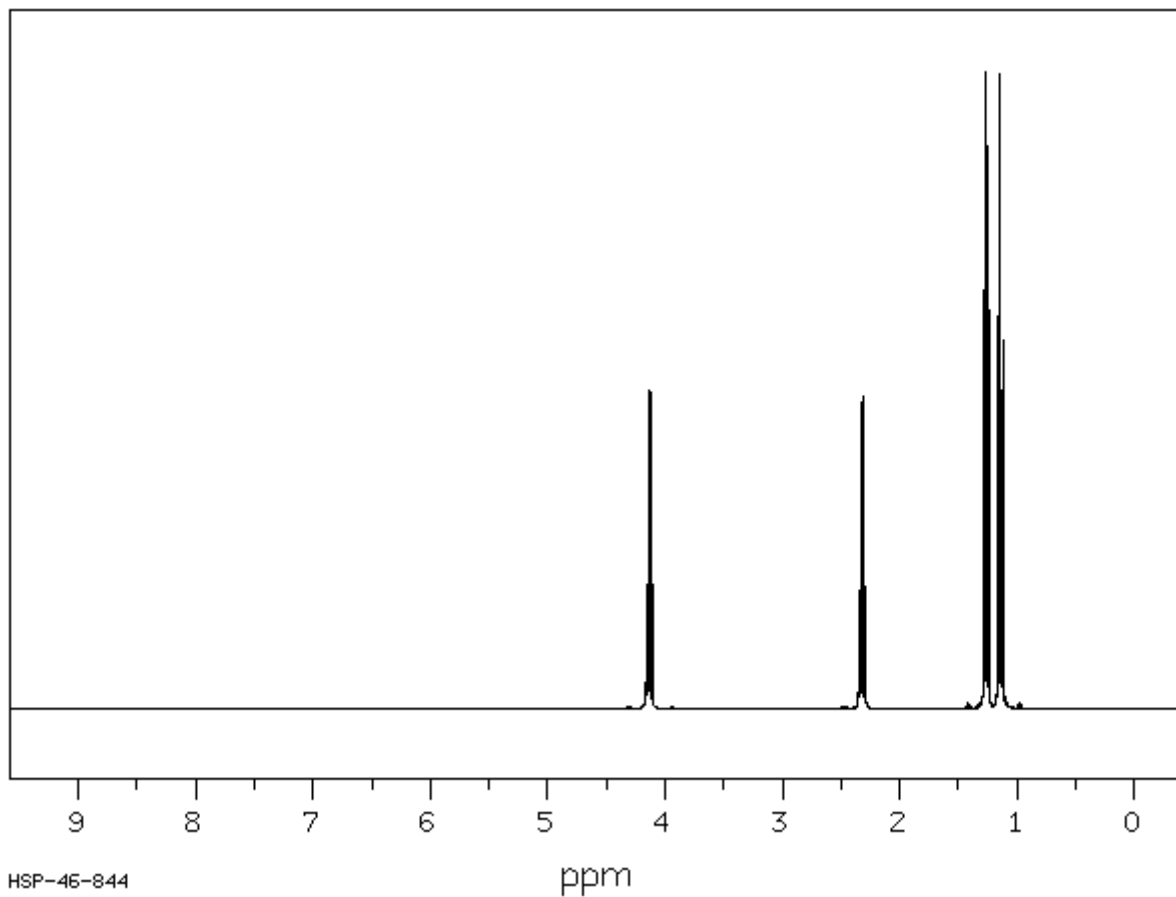
SDBS-¹H NMR SDBS No. 2285HSP-46-844

C₅ H₁₀ O₂

ethyl propionate

399.65 MHz

0.05 ml : 0.5 ml CDCl₃



Assign.	Shift (ppm)
A	4.132
B	2.319
C	1.259
D	1.140

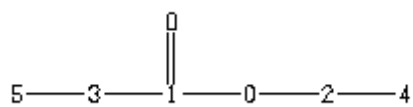
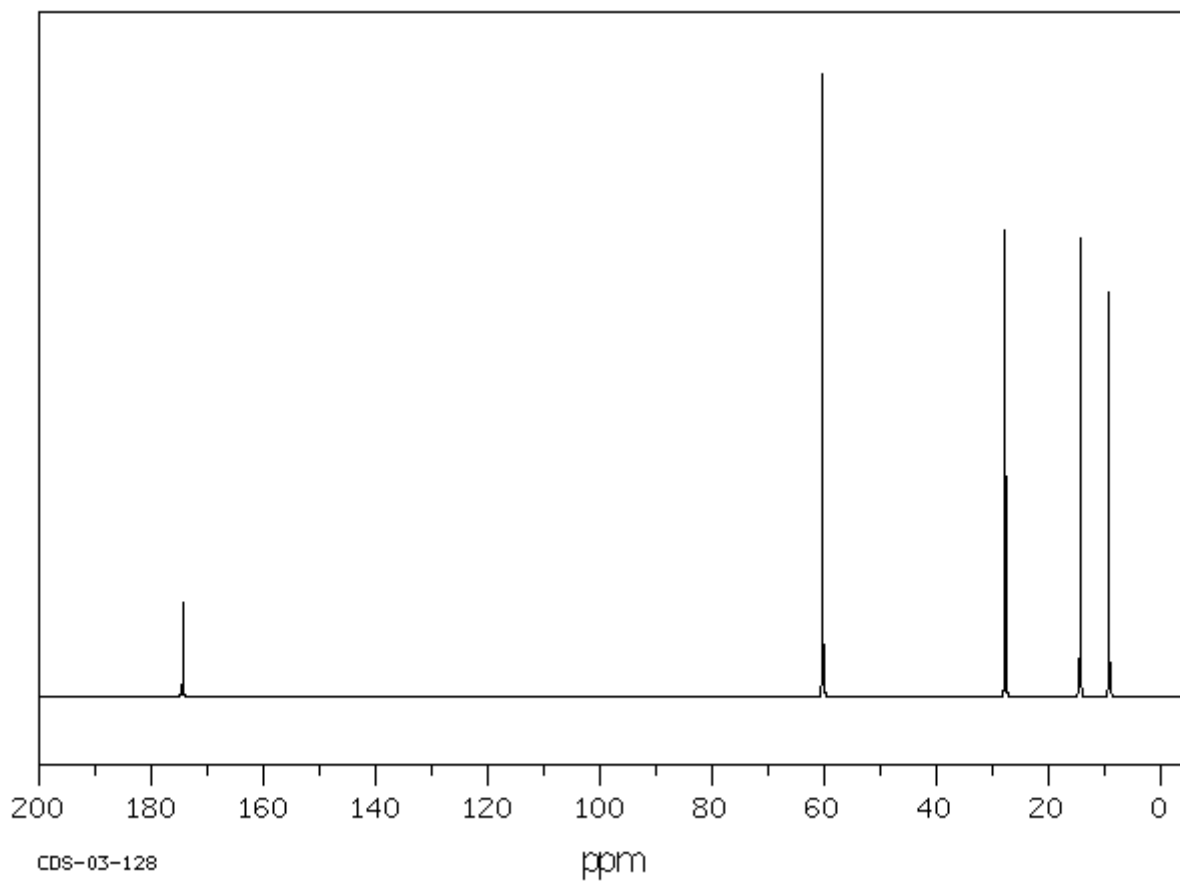
SDBS-¹³C NMR SDBS No. 2285CDS-03-128

C₅H₁₀O₂

ethyl propionate

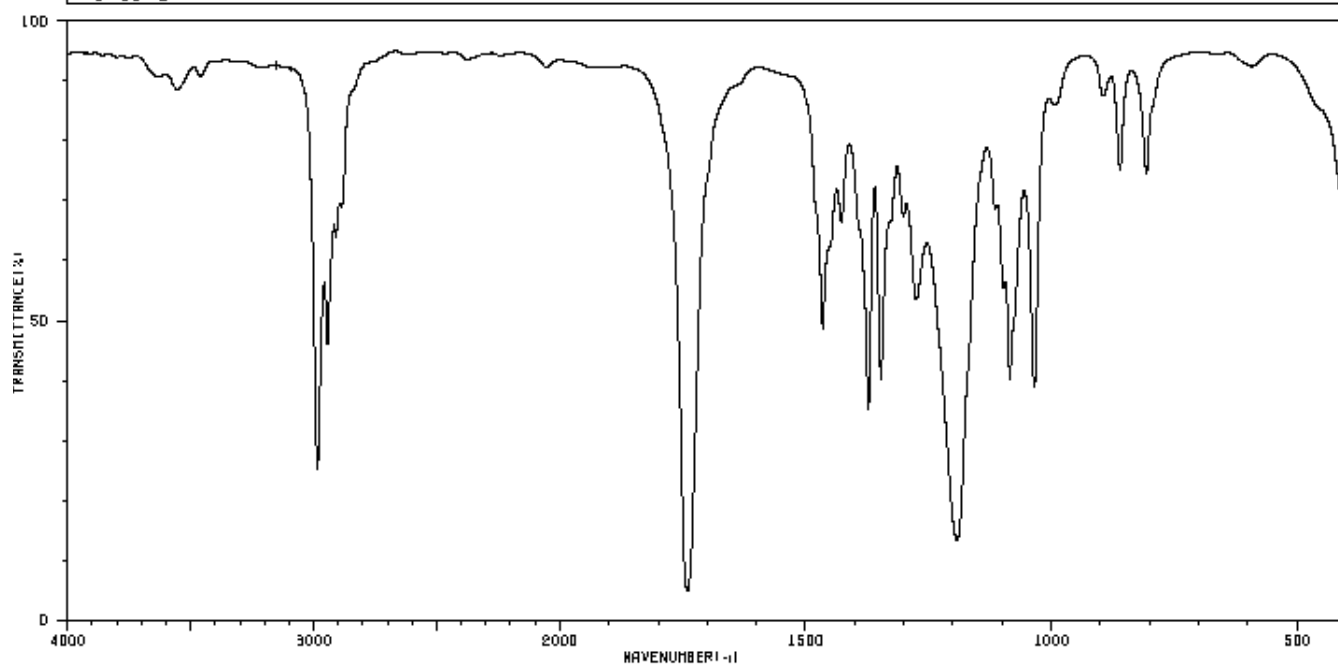
15.09 MHz

20 vol% in CDCl₃

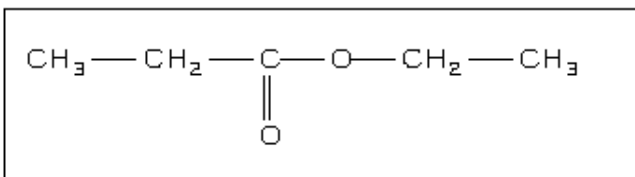


ppm	Int.	Assign.
174.40	151	1
60.26	1000	2
27.71	748	3
14.32	734	4
9.19	647	5

HIT-NO=1821	SCORE= ()	SDBS-NO=2285	IR-NIDA-00113 ; LIQUID FILM
ETHYL PROPIONATE			
C ₅ H ₁₀ O ₂			

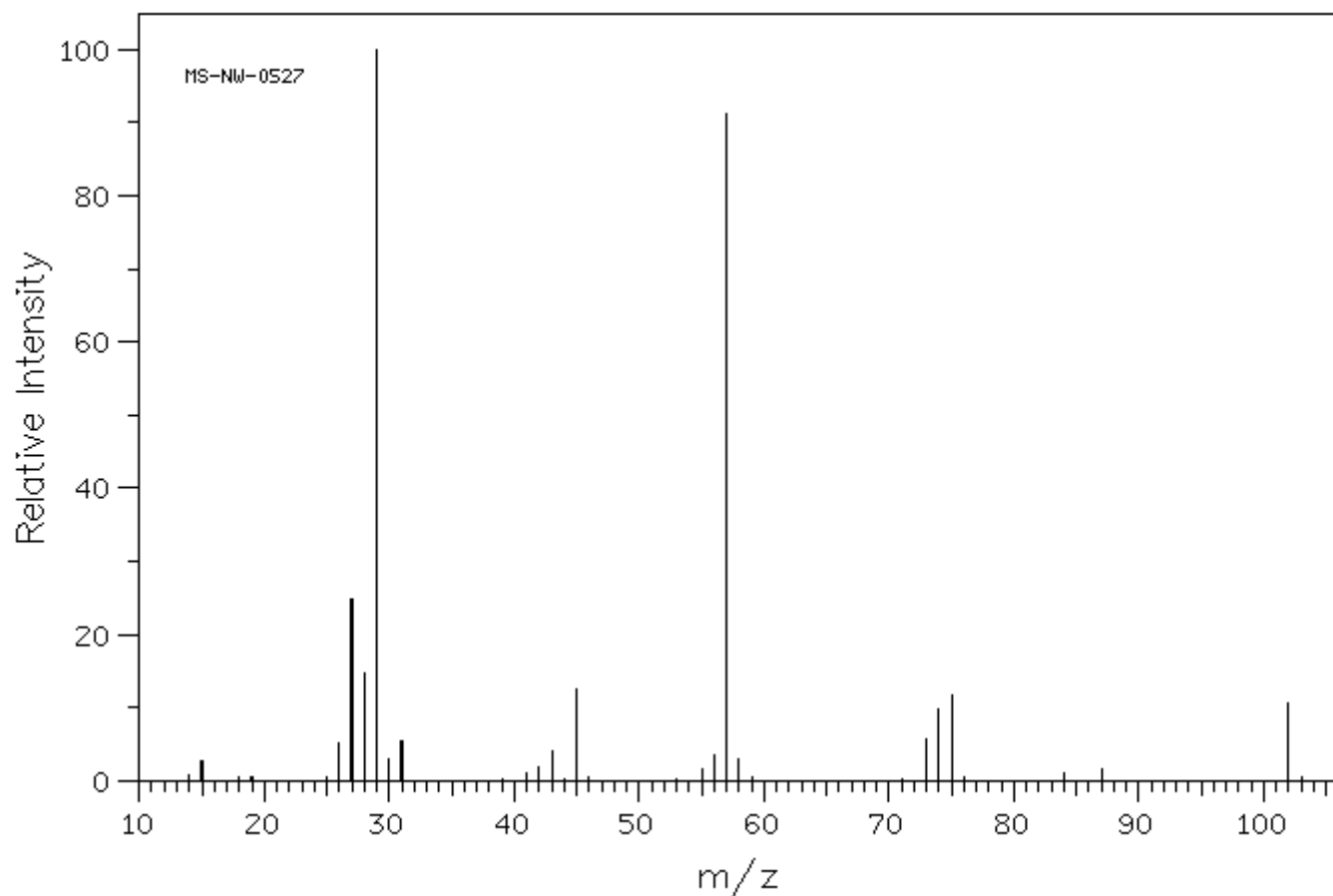


3664	84	1427	64	1036	37
2985	23	1372	34	991	81
2945	44	1347	36	895	84
2910	60	1301	64	860	72
1740	4	1275	52	807	72
1465	47	1192	12		
1451	60	1084	38		



MS-NW-0527
ETHYL PROPIONATE
C5H10O2

SDBS NO. 2285
(Mass of molecular ion: 102)



Source Temperature: 250 C
Sample Temperature: 140 C
Reservoir, 75 eV

SDBS-Mass

15.0	2
26.0	5
27.0	24
28.0	14
29.0	100
30.0	3
31.0	5
41.0	1
42.0	2
43.0	4
45.0	12
55.0	1
56.0	3
57.0	91
58.0	3
73.0	5
74.0	9
75.0	11
84.0	1
87.0	1
102.0	10