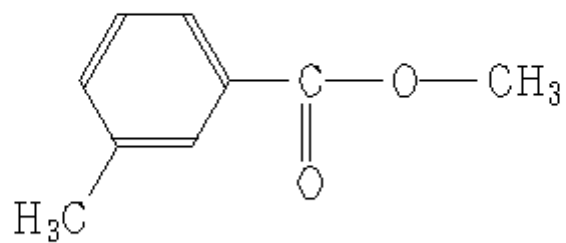


SDBS-NO= 1877  
METHYL M-TOLUATE



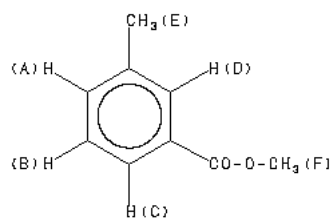
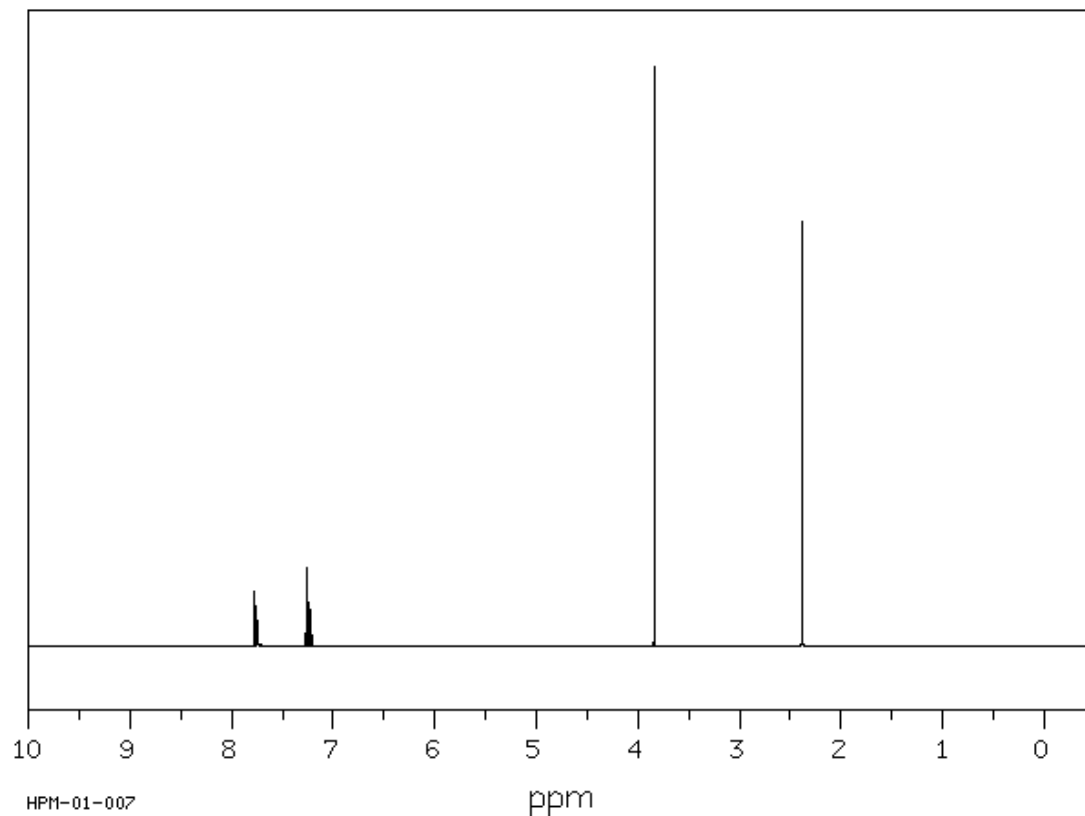
**SDBS-<sup>1</sup>H NMR**SDBS No. 1877HPM-01-007

C<sub>9</sub> H<sub>10</sub> O<sub>2</sub>

**methyl m-toluate**

300 MHz

5.0 mol% in CCl<sub>4</sub>



Parameter	ppm	Hz
D (A)	7.261	
D (B)	7.237	
D (C)	7.754	
D (D)	7.777	
J (A, B)	7.56	
J (A, C)	1.13	
J (A, D)	1.89	
J (B, C)	7.87	
J (B, D)	0.49	
J (C, D)	1.70	
D (E)	2.39	
D (F)	3.843	

YAMAMOTO, O. ET AL. ANAL.CHEM. 44, 1794 (1972)

SMALL LONG RANGE COUPLINGS EXIST BETWEEN CH<sub>3</sub>(E) AND AROMATIC PROTONS

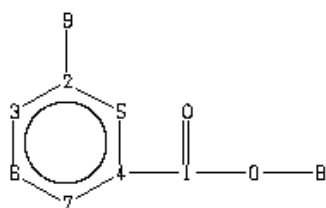
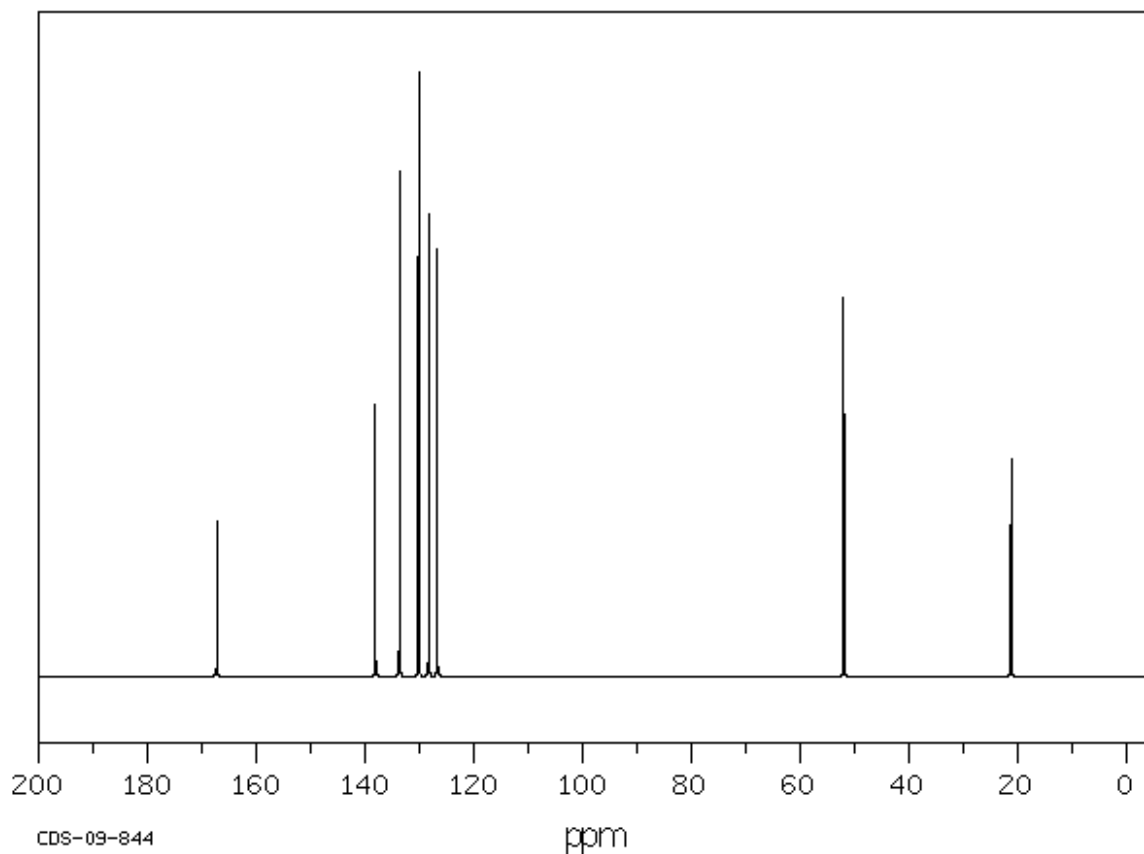
SDBS-<sup>13</sup>C NMR SDBS No. 1877CDS-09-844

C<sub>9</sub>H<sub>10</sub>O<sub>2</sub>

**methyl m-toluate**

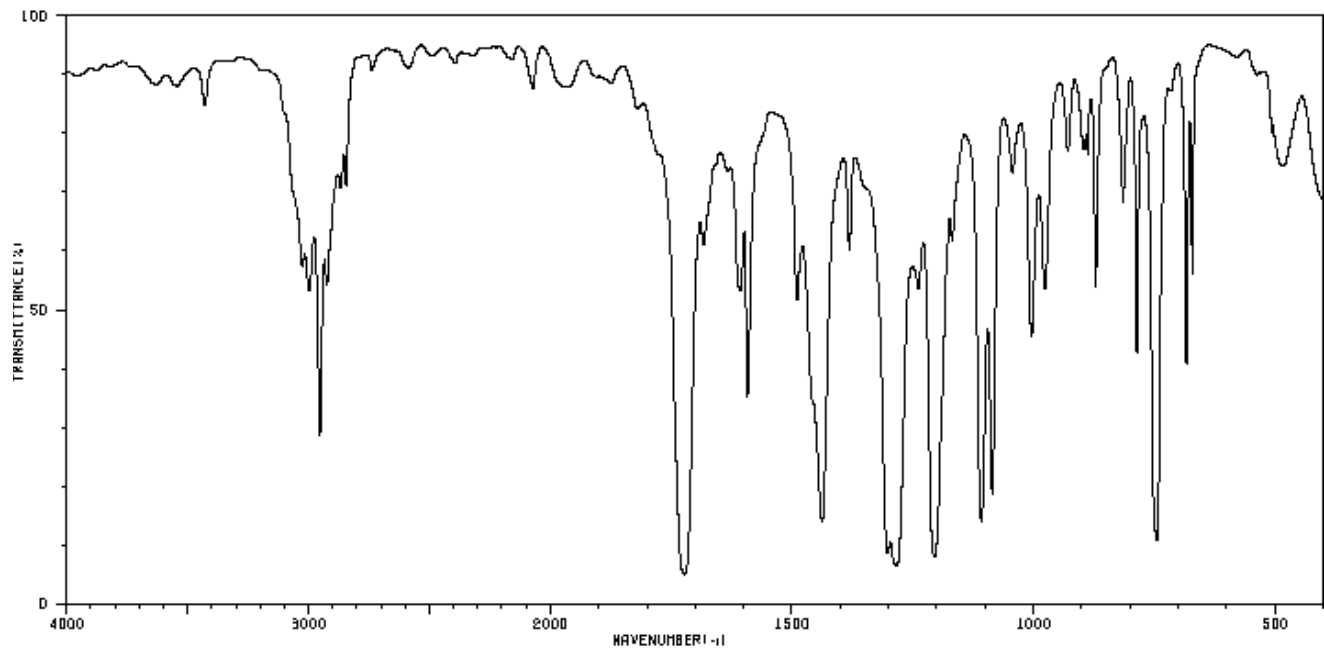
25.16 MHz

0.5 ml : 1.5 ml CDCl<sub>3</sub>

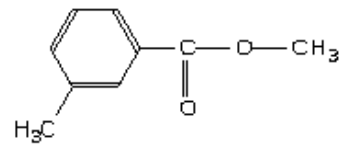


ppm	Int.	Assign.
167.25	255	1
138.14	450	2
133.68	835	3
130.17	1000	4
		5
128.29	765	6
126.75	705	7
51.97	625	8
21.23	360	9

HIT-NO=1614	SCORE= ( )	SDBS-NO=1877	IR-NIDA-26340 : LIQUID FILM
METHYL M-TOLUATE			
C <sub>9</sub> H <sub>10</sub> O <sub>2</sub>			



3429	81	1873	84	1381	58	1085	17	871	52
3026	55	1722	4	1302	8	1043	70	815	66
2996	50	1682	58	1264	6	1004	49	786	41
2952	27	1607	50	1239	52	976	52	746	10
2924	52	1592	34	1205	7	929	74	684	39
2867	88	1489	49	1168	58	897	74	672	53
2844	68	1438	19	1108	13	888	74	484	72



# SDBS-Mass

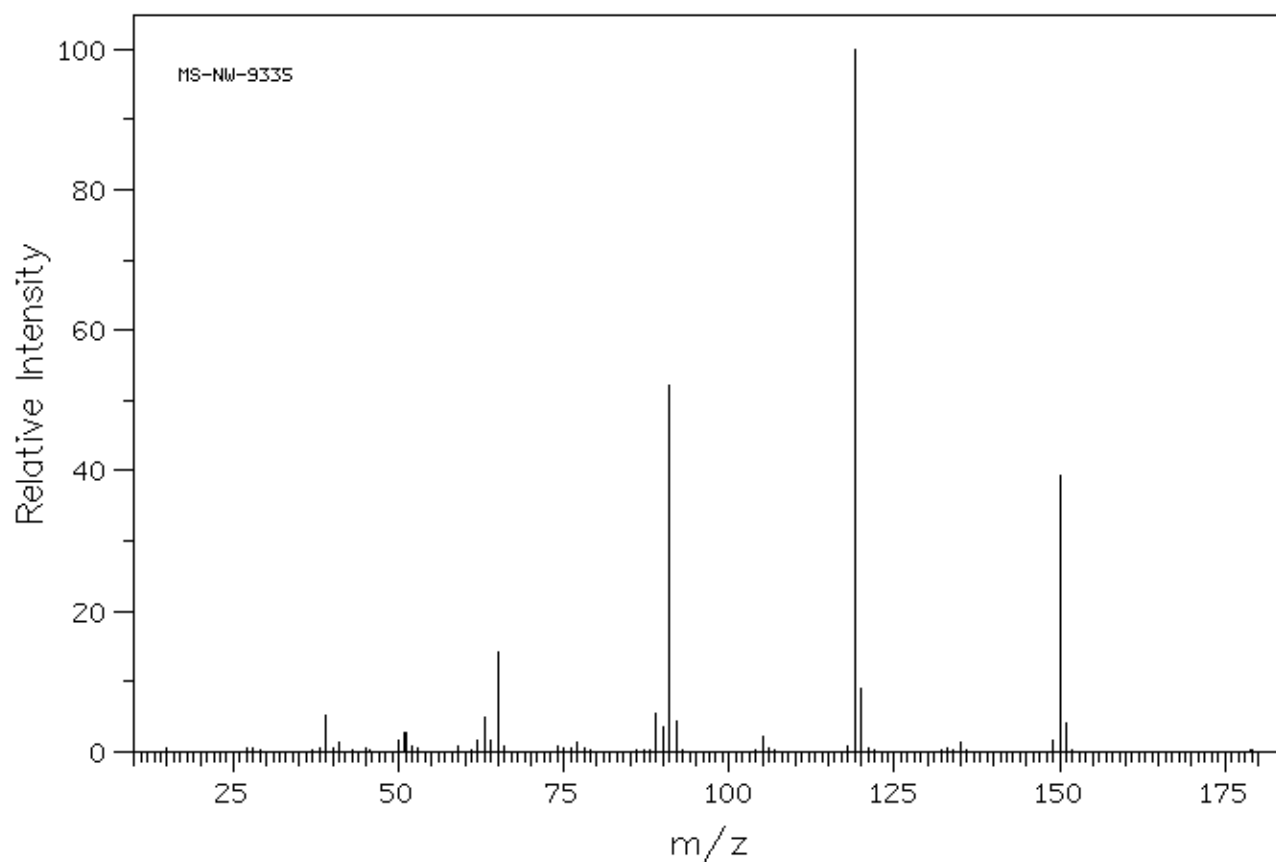
MS-NW-9335

SDBS NO. 1877

METHYL M-TOLUATE

C<sub>9</sub>H<sub>10</sub>O<sub>2</sub>

(Mass of molecular ion: 150)



Source Temperature: 230 C

Sample Temperature: 150 C

Reservoir, 75 eV

---

39.0	5
41.0	1
50.0	1
51.0	2
62.0	1
63.0	4
64.0	1
65.0	14
77.0	1
89.0	5
90.0	3
91.0	52
92.0	4
118.0	0
119.0	100
120.0	9
135.0	1
149.0	1
150.0	39
151.0	4