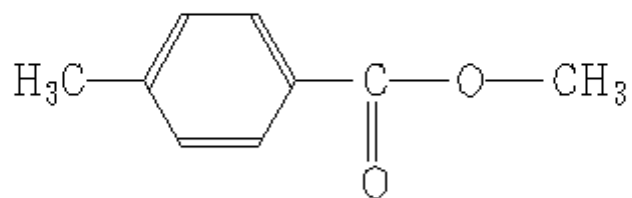


SDBS-NO= 2809
METHYL P-TOLUATE



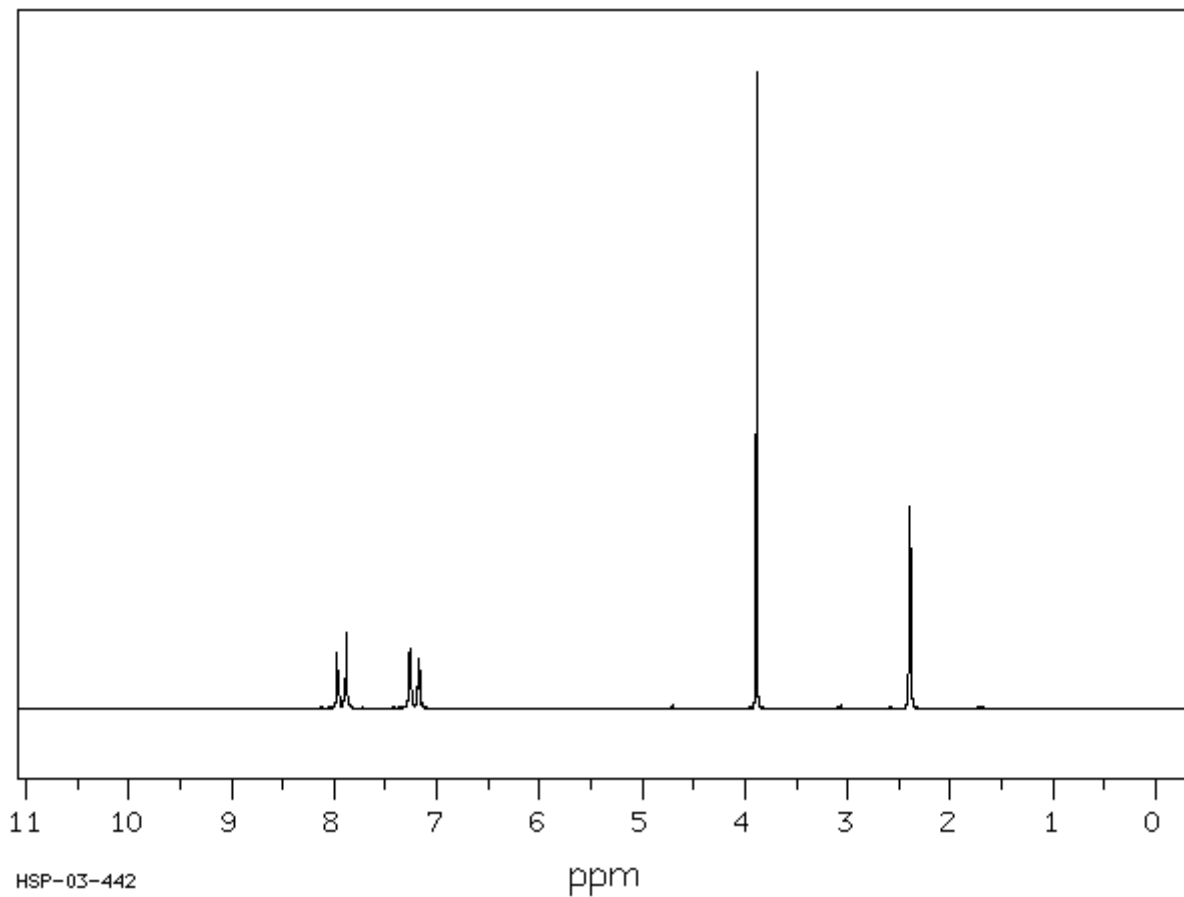
SDBS-¹H NMRSDBS No. 2809HSP-03-442

C₉ H₁₀ O₂

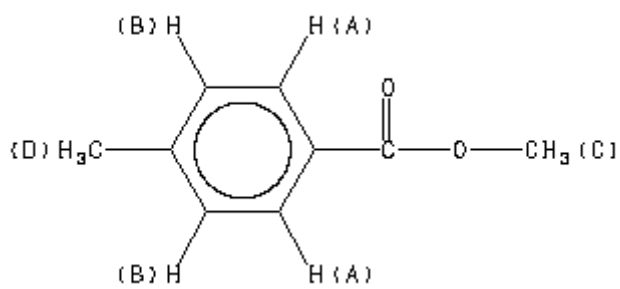
methyl p-toluate

89.56 MHz

0.054 g : 0.5 ml CDCl₃



HSP-03-442



Assign.	Shift (ppm)
A	7.92
B	7.23
C	3.886
D	2.394

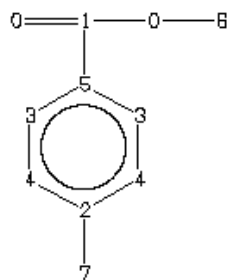
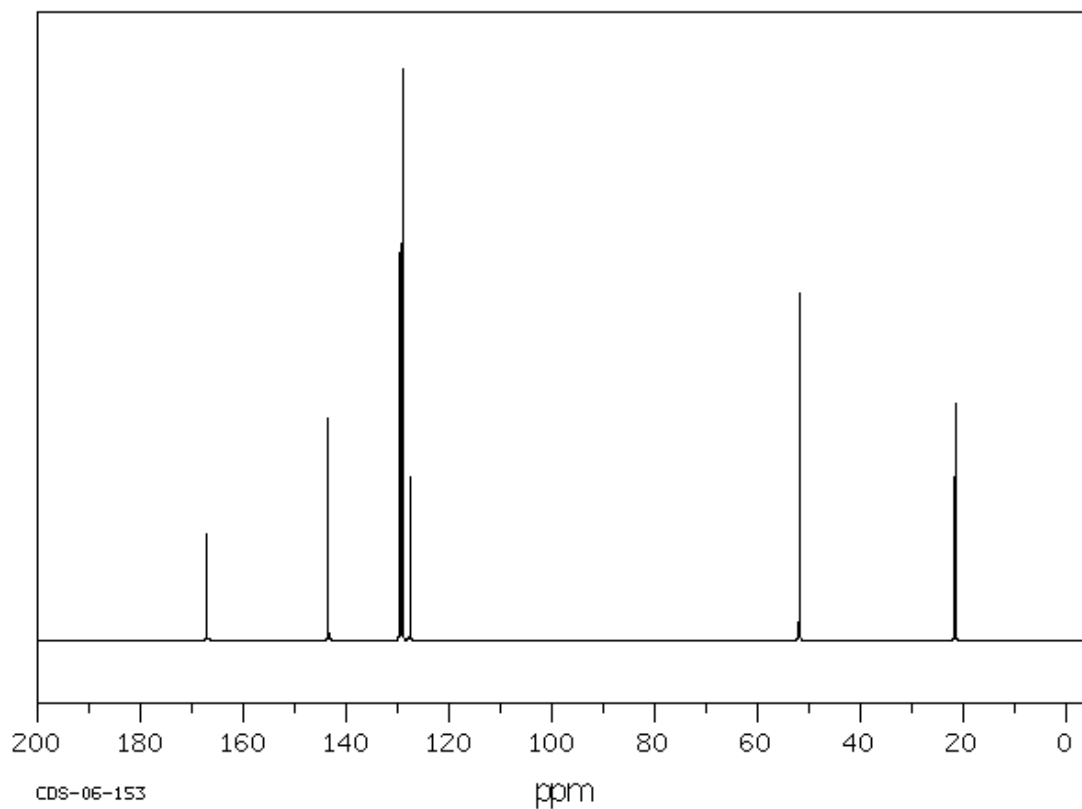
SDBS-¹³C NMRSDBS No. 2809CDS-06-153

25.16 MHz

C₉H₁₀O₂

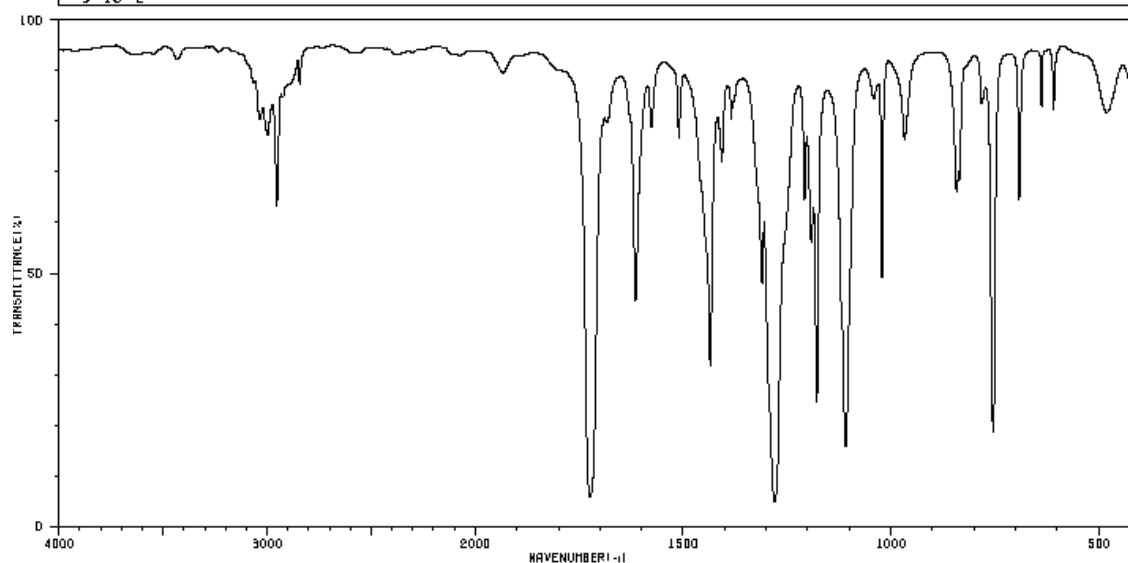
0.5 ml : 1.5 ml CDCl₃

methyl p-toluate

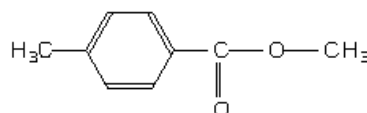


ppm	Int.	Assign.
167.11	184	1
143.51	388	2
129.62	677	3 *
129.09	1000	4 *
127.54	284	5
51.86	607	6
21.59	413	7

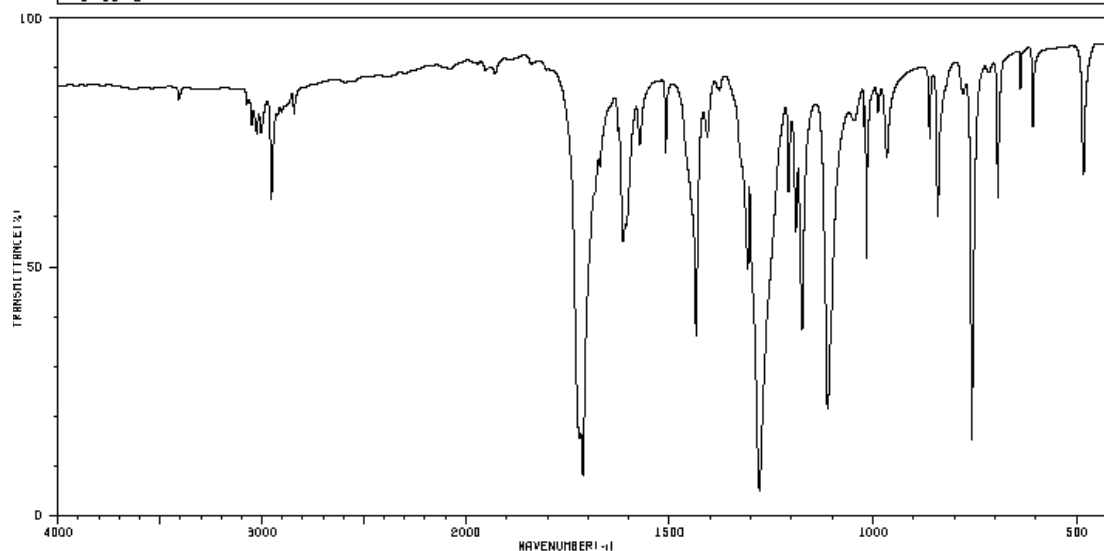
HIT-NO=2049	SCORE= ()	SDBS-NO=2809	IR-NIDA-00564 : LIQUID FILM
METHYL P-TOLUATE			
C ₉ H ₁₀ O ₂			



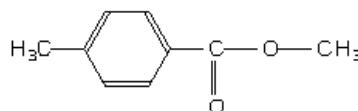
3036	77	1677	77	1280	4	1022	47	638	79
2998	74	1511	74	1209	62	967	74	609	79
2953	80	1435	30	1192	53	842	64	481	79
2843	84	1407	70	1179	23	836	66		
1932	86	1384	77	1109	15	782	79		
1724	5	1378	61	1042	81	754	18		
1616	43	1310	46	1031	84	692	62		



HIT-NO=2195	SCORE= ()	SDBS-NO=2809	IR-NIDA-03744 : KBR DISC
METHYL P-TOLUATE			
C ₉ H ₁₀ O ₂			



3408	79	1721	14	1436	36	1112	20	861	72
3050	74	1712	7	1408	72	1046	77	840	57
3025	74	1670	66	1308	47	1022	74	756	14
3003	74	1614	53	1279	4	1016	60	748	68
2953	60	1606	57	1208	62	1011	77	694	60
2925	77	1573	72	1190	55	988	78	606	74
2842	77	1609	70	1174	36	966	68	483	66



SDBS-Mass

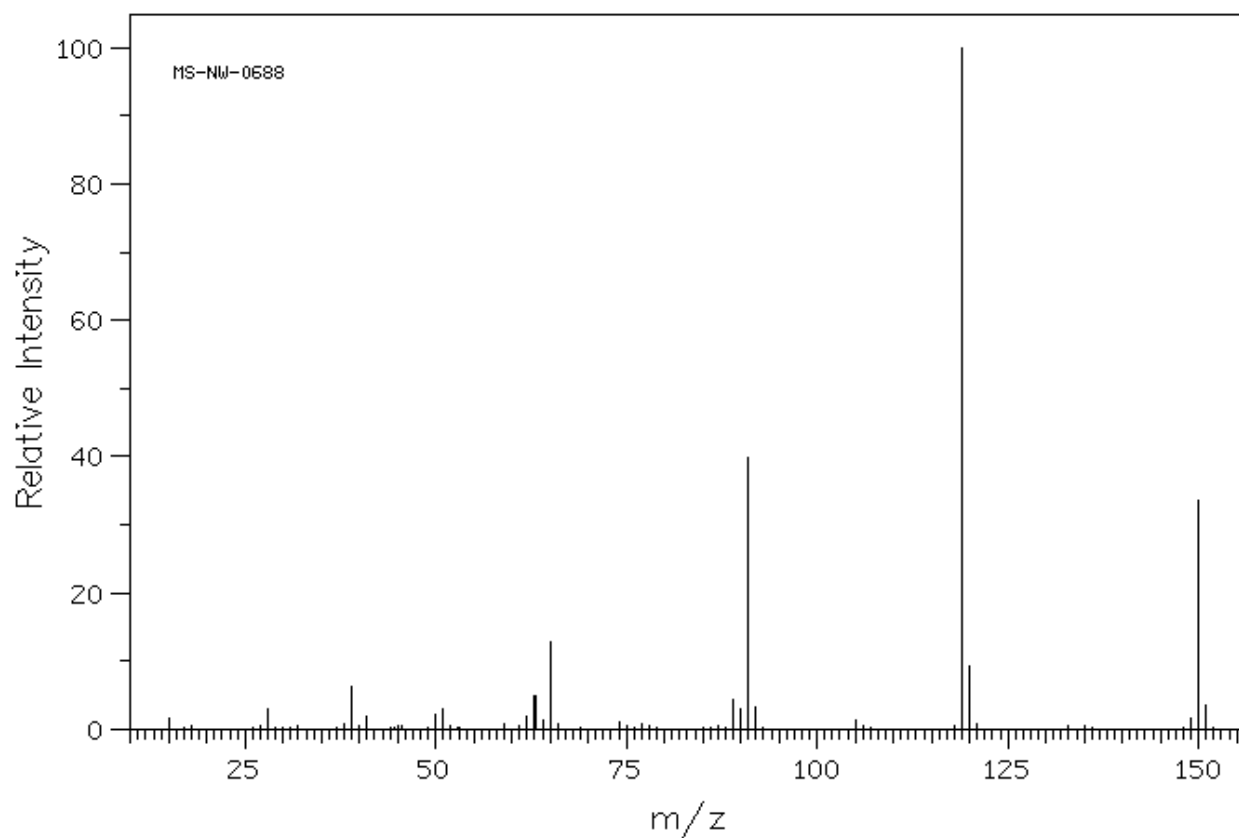
MS-NW-0688

SDBS NO. 2809

METHYL P-TOLUATE

C₉H₁₀O₂

(Mass of molecular ion: 150)



Source Temperature: 200 C

Sample Temperature: 150 C

Reservoir, 75 eV

15.0	1
28.0	2
39.0	6
41.0	1
50.0	2
51.0	3
62.0	1
63.0	4
64.0	1
65.0	12
74.0	1
89.0	4
90.0	3
91.0	39
92.0	3
118.0	0
119.0	100
120.0	9
149.0	1
150.0	33
151.0	3